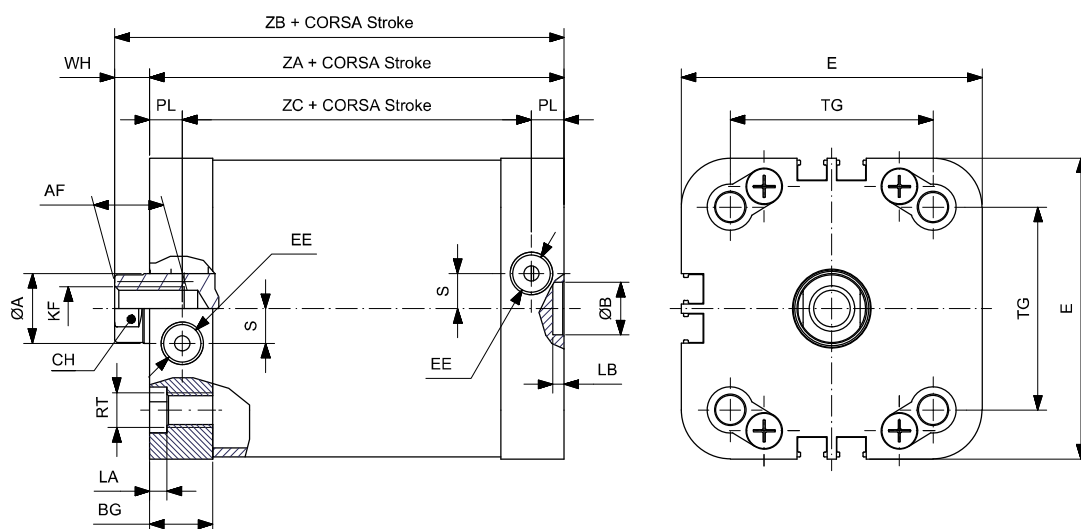


CILINDRI COMPATTI ISO 21287 Ø20-100 ISO 21287 COMPACT CYLINDERS Ø20-100

SEMPLICE EFFETTO MAGNETICO STELO FILETTATO FEMMINA SINGLE ACTING MAGNETIC FEMALE THREADED PISTON ROD

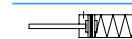
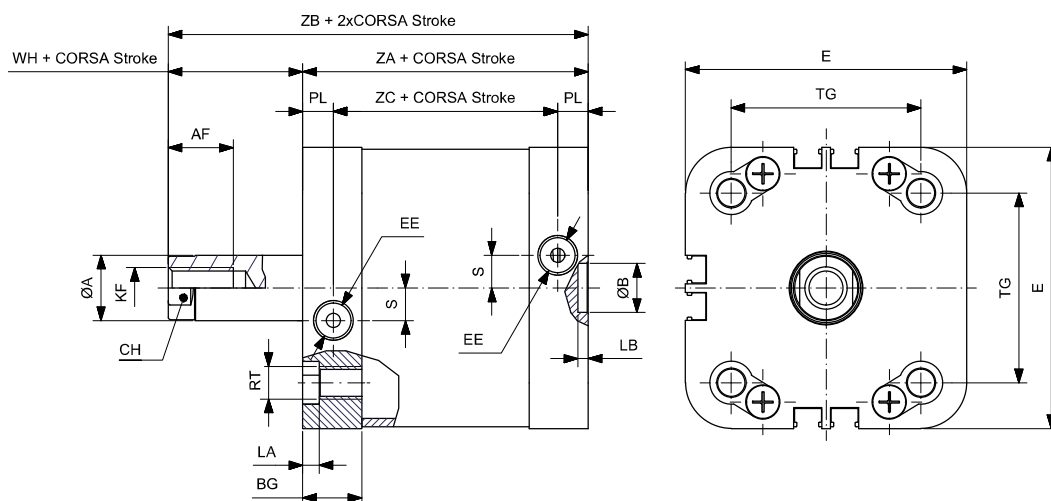
CSEMØ/...KNF



Ømm	ØA	CH	AF	WH	ZA	ZB	ZC	KF	EE	BG	TG	E	RT	LA	PL	ØB	LB	S
20	10	9	10	6	37	43	23	M6X1	M5X0.8	14.25	22	36	M5X0.8	3	7	9	2.1	2.5
25	10	9	10	6	39	45	25	M6X1	M5X0.8	14	26	39.5	M5X0.8	3	7	9	2.1	2.5
32	12	10	12	7	44	51	28.5	M8X1.25	1/8"G	15.5	32.5	49.5	M6X1	3.5	7.75	9	2.1	6
40	12	10	12	7	45	52	29.5	M8X1.25	1/8"G	15.5	38	54	M6X1	3.5	7.75	9	2.1	8
50	16	13	16	8	45	53	29.5	M10X1.5	1/8"G	14.5	46.5	69	M8X1.25	4	7.5	12	2.6	8
63	16	13	16	8	49	57	33.5	M10X1.5	1/8"G	15.5	56.5	79	M8X1.25	4	7.75	12	2.6	11.5
80	20	17	20	10	54	64	36.5	M12X1.75	1/8"G	17.5	72	94.5	M10X1.5	5	8.75	12	2.6	11.5
100	25	21	20	10	67	77	46	M12X1.75	1/8"G	21	89	114.5	M10X1.5	5	10.5	12	2.6	20

SEMPLICE EFFETTO MOLLA POSTERIORE MAGNETICO STELO FILETTATO FEMMINA SINGLE ACTING REAR SPRING MAGNETIC FEMALE THREADED PISTON ROD

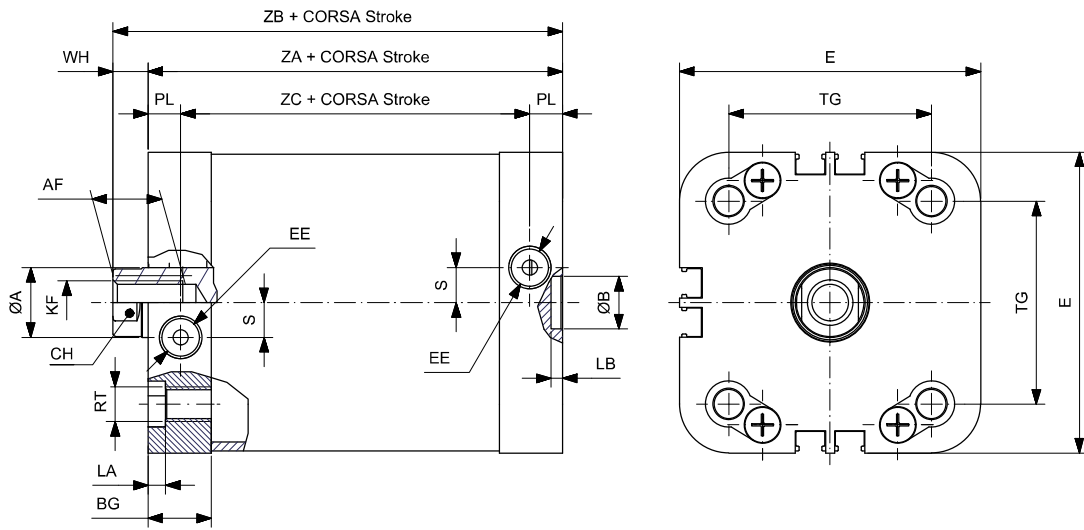
CSEMTØ/...KNF



Ømm	ØA	CH	AF	WH	ZA	ZB	ZC	KF	EE	BG	TG	E	RT	LA	PL	ØB	LB	S
20	10	9	10	6	37	43	23	M6X1	M5X0.8	14.25	22	36	M5X0.8	3	7	9	2.1	2.5
25	10	9	10	6	39	45	25	M6X1	M5X0.8	14	26	39.5	M5X0.8	3	7	9	2.1	2.5
32	12	10	12	7	44	51	28.5	M8X1.25	1/8"G	15.5	32.5	49.5	M6X1	3.5	7.75	9	2.1	6
40	12	10	12	7	45	52	29.5	M8X1.25	1/8"G	15.5	38	54	M6X1	3.5	7.75	9	2.1	8
50	16	13	16	8	45	53	29.5	M10X1.5	1/8"G	14.5	46.5	69	M8X1.25	4	7.5	12	2.6	8
63	16	13	16	8	49	57	33.5	M10X1.5	1/8"G	15.5	56.5	79	M8X1.25	4	7.75	12	2.6	11.5
80	20	17	20	10	54	64	36.5	M12X1.75	1/8"G	17.5	72	94.5	M10X1.5	5	8.75	12	2.6	11.5
100	25	21	20	10	67	77	46	M12X1.75	1/8"G	21	89	114.5	M10X1.5	5	10.5	12	2.6	20

DOPIO EFFETTO MAGNETICO STELO FILETTATO FEMMINA
DOUBLE ACTING MAGNETIC FEMALE THREADED PISTON ROD

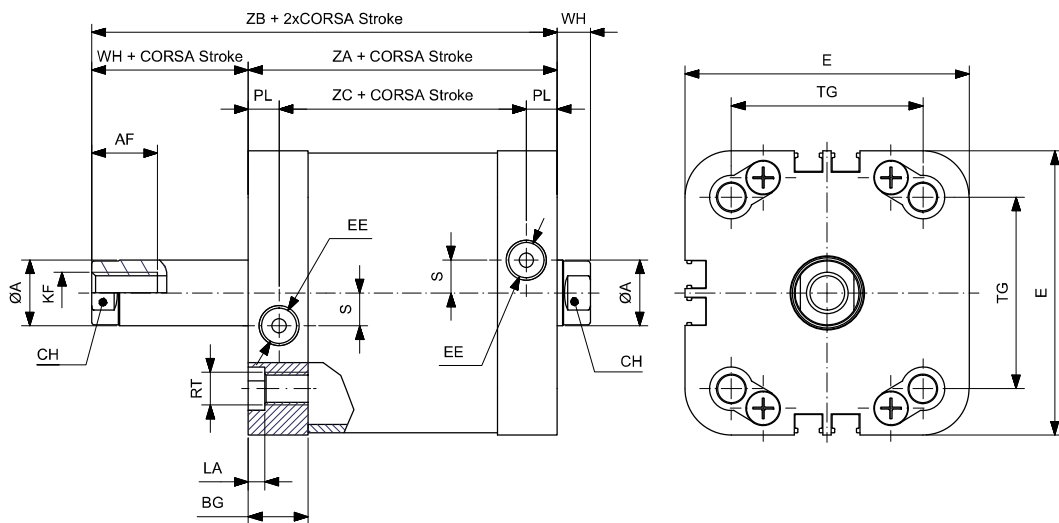
CDEMØ/...KNF



Ømm	ØA	CH	AF	WH	ZA	ZB	ZC	KF	EE	BG	TG	E	RT	LA	PL	ØB	LB	S
20	10	9	10	6	37	43	23	M6X1	M5X0.8	14.25	22	36	M5X0.8	3	7	9	2.1	2.5
25	10	9	10	6	39	45	25	M6X1	M5X0.8	14	26	39.5	M5X0.8	3	7	9	2.1	2.5
32	12	10	12	7	44	51	28.5	M8X1.25	1/8"G	15.5	32.5	49.5	M6X1	3.5	7.75	9	2.1	6
40	12	10	12	7	45	52	29.5	M8X1.25	1/8"G	15.5	38	54	M6X1	3.5	7.75	9	2.1	8
50	16	13	16	8	45	53	29.5	M10X1.5	1/8"G	14.5	46.5	69	M8X1.25	4	7.5	12	2.6	8
63	16	13	16	8	49	57	33.5	M10X1.5	1/8"G	15.5	56.5	79	M8X1.25	4	7.75	12	2.6	11.5
80	20	17	20	10	54	64	36.5	M12X1.75	1/8"G	17.5	72	94.5	M10X1.5	5	8.75	12	2.6	11.5
100	25	21	20	10	67	77	46	M12X1.75	1/8"G	21	89	114.5	M10X1.5	5	10.5	12	2.6	20

DOPIO EFFETTO PASSANTE MAGNETICO STELO FILETTATO FEMMINA
DOUBLE ACTING THROUGH PISTON ROD MAGNETIC FEMALE THREADED PISTON ROD

CDEMPØ/...KNF

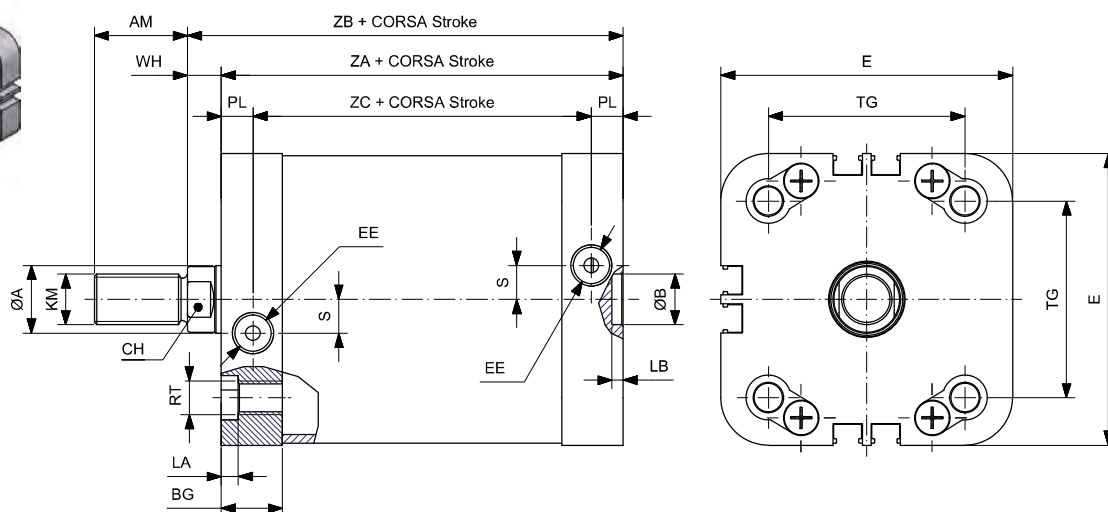


Ømm	ØA	CH	AF	WH	ZA	ZB	ZC	KF	EE	BG	TG	E	RT	LA	PL	S
20	10	9	10	6	37	43	23	M6X1	M5X0.8	14.25	22	36	M5X0.8	3	7	2.5
25	10	9	10	6	39	45	25	M6X1	M5X0.8	14	26	39.5	M5X0.8	3	7	2.5
32	12	10	12	7	44	51	28.5	M8X1.25	1/8"G	15.5	32.5	49.5	M6X1	3.5	7.75	6
40	12	10	12	7	45	52	29.5	M8X1.25	1/8"G	15.5	38	54	M6X1	3.5	7.75	8
50	16	13	16	8	45	53	29.5	M10X1.5	1/8"G	14.5	46.5	69	M8X1.25	4	7.5	8
63	16	13	16	8	49	57	33.5	M10X1.5	1/8"G	15.5	56.5	79	M8X1.25	4	7.75	11.5
80	20	17	20	10	54	64	36.5	M12X1.75	1/8"G	17.5	72	94.5	M10X1.5	5	8.75	11.5
100	25	21	20	10	67	77	46	M12X1.75	1/8"G	21	89	114.5	M10X1.5	5	10.5	20

CILINDRI COMPATTI ISO 21287 Ø20-100 ISO 21287 COMPACT CYLINDERS Ø20-100

SEMPLICE EFFETTO MAGNETICO STELO FILETTATO MASCHIO SINGLE ACTING MAGNETIC MALE THREADED PISTON ROD

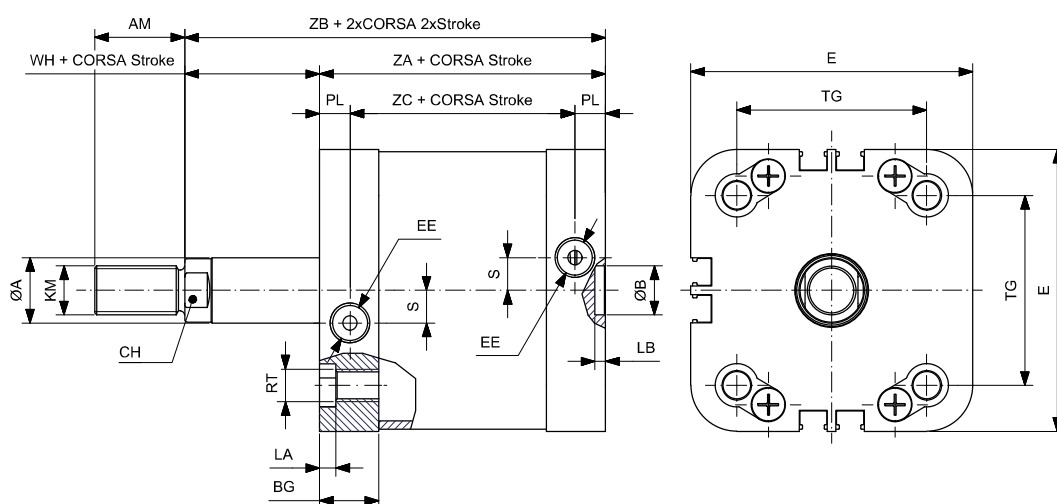
CSEMØ/...KNM



Ømm	ØA	CH	AM	WH	ZA	ZB	ZC	KM	EE	BG	TG	E	RT	LA	PL	ØB	LB	S
20	10	9	16	6	37	43	23	M8X1.25	M5X0.8	14.25	22	36	M5X0.8	3	7	9	2.1	2.5
25	10	9	16	6	39	45	25	M8X1.25	M5X0.8	14	26	39.5	M5X0.8	3	7	9	2.1	2.5
32	12	10	19	7	44	51	28.5	M10X1.25	1/8"G	15.5	32.5	49.5	M6X1	3.5	7.75	9	2.1	6
40	12	10	19	7	45	52	29.5	M10X1.25	1/8"G	15.5	38	54	M6X1	3.5	7.75	9	2.1	8
50	16	13	22	8	45	53	29.5	M12X1.25	1/8"G	14.5	46.5	69	M8X1.25	4	7.5	12	2.6	8
63	16	13	22	8	49	57	33.5	M12X1.25	1/8"G	15.5	56.5	79	M8X1.25	4	7.75	12	2.6	11.5
80	20	17	28	10	54	64	36.5	M16X1.5	1/8"G	17.5	72	94.5	M10X1.5	5	8.75	12	2.6	11.5
100	25	21	28	10	67	77	46	M16X1.5	1/8"G	21	89	114.5	M10X1.5	5	10.5	12	2.6	20

SEMPLICE EFFETTO MOLLA POSTERIORE MAGNETICO STELO FILETTATO MASCHIO SINGLE ACTING REAR SPRING MAGNETIC MALE THREADED PISTON ROD

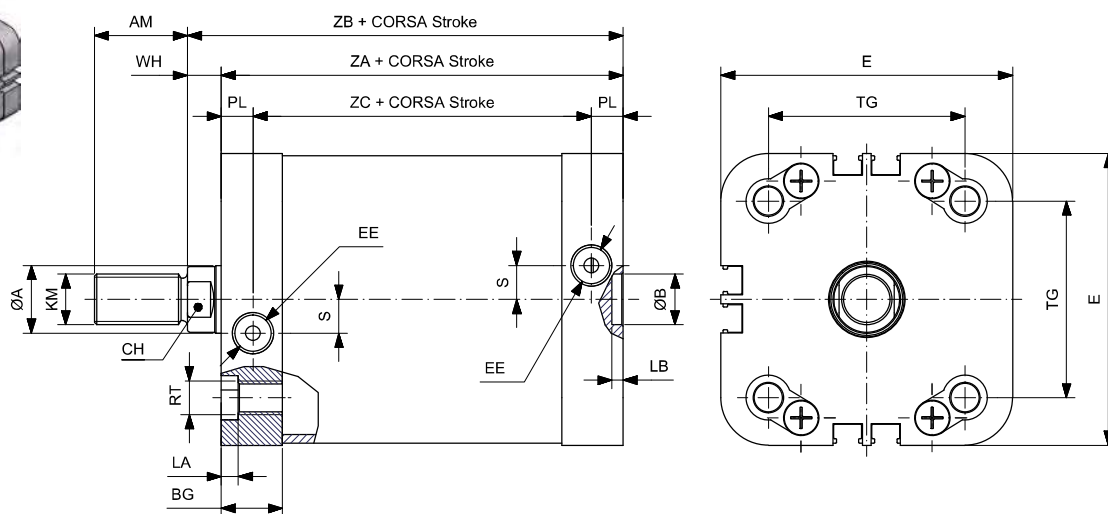
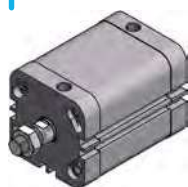
CSEMTØ/...KNM



Ømm	ØA	CH	AM	WH	ZA	ZB	ZC	KM	EE	BG	TG	E	RT	LA	PL	ØB	LB	S
20	10	9	16	6	37	43	23	M8X1.25	M5X0.8	14.25	22	36	M5X0.8	3	7	9	2.1	2.5
25	10	9	16	6	39	45	25	M8X1.25	M5X0.8	14	26	39.5	M5X0.8	3	7	9	2.1	2.5
32	12	10	19	7	44	51	28.5	M10X1.25	1/8"G	15.5	32.5	49.5	M6X1	3.5	7.75	9	2.1	6
40	12	10	19	7	45	52	29.5	M10X1.25	1/8"G	15.5	38	54	M6X1	3.5	7.75	9	2.1	8
50	16	13	22	8	45	53	29.5	M12X1.25	1/8"G	14.5	46.5	69	M8X1.25	4	7.5	12	2.6	8
63	16	13	22	8	49	57	33.5	M12X1.25	1/8"G	15.5	56.5	79	M8X1.25	4	7.75	12	2.6	11.5
80	20	17	28	10	54	64	36.5	M16X1.5	1/8"G	17.5	72	94.5	M10X1.5	5	8.75	12	2.6	11.5
100	25	21	28	10	67	77	46	M16X1.5	1/8"G	21	89	114.5	M10X1.5	5	10.5	12	2.6	20

DOPPIO EFFETTO MAGNETICO STELO FILETTATO MASCHIO
DOUBLE ACTING MAGNETIC MALE THREADED PISTON ROD

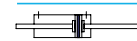
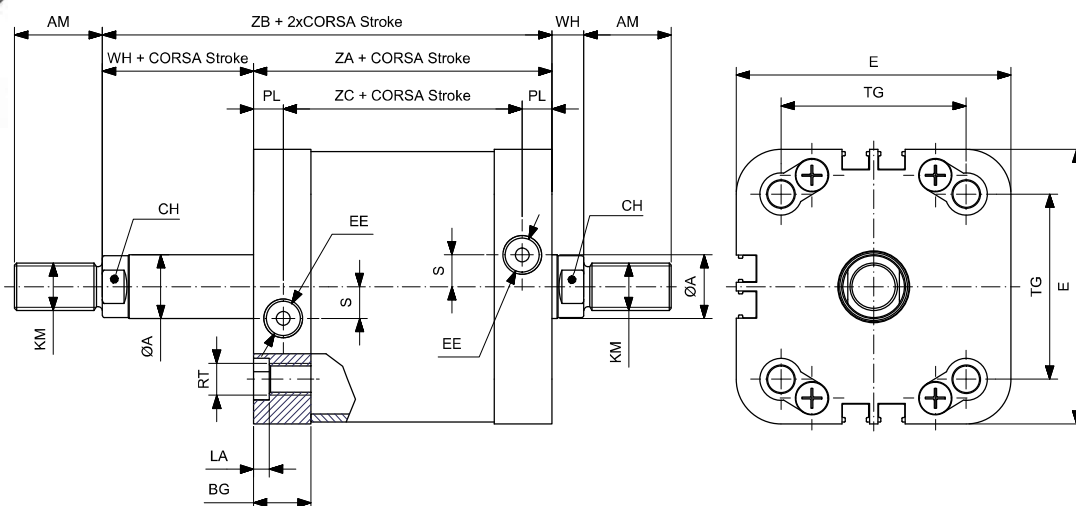
CDEMØ/...KNM



Ømm	ØA	CH	AM	WH	ZA	ZB	ZC	KM	EE	BG	TG	E	RT	LA	PL	ØB	LB	S
20	10	9	16	6	37	43	23	M8X1.25	M5X0.8	14.25	22	36	M5X0.8	3	7	9	2.1	2.5
25	10	9	16	6	39	45	25	M8X1.25	M5X0.8	14	26	39.5	M5X0.8	3	7	9	2.1	2.5
32	12	10	19	7	44	51	28.5	M10X1.25	1/8"G	15.5	32.5	49.5	M6X1	3.5	7.75	9	2.1	6
40	12	10	19	7	45	52	29.5	M10X1.25	1/8"G	15.5	38	54	M6X1	3.5	7.75	9	2.1	8
50	16	13	22	8	45	53	29.5	M12X1.25	1/8"G	14.5	46.5	69	M8X1.25	4	7.5	12	2.6	8
63	16	13	22	8	49	57	33.5	M12X1.25	1/8"G	15.5	56.5	79	M8X1.25	4	7.75	12	2.6	11.5
80	20	17	28	10	54	64	36.5	M16X1.5	1/8"G	17.5	72	94.5	M10X1.5	5	8.75	12	2.6	11.5
100	25	21	28	10	67	77	46	M16X1.5	1/8"G	21	89	114.5	M10X1.5	5	10.5	12	2.6	20

DOPPIO EFFETTO PASSANTE MAGNETICO STELO FILETTATO MASCHIO
DOUBLE ACTING THROUGH PISTON ROD MAGNETIC MALE THREADED PISTON ROD

CDEMPØ/...KNM

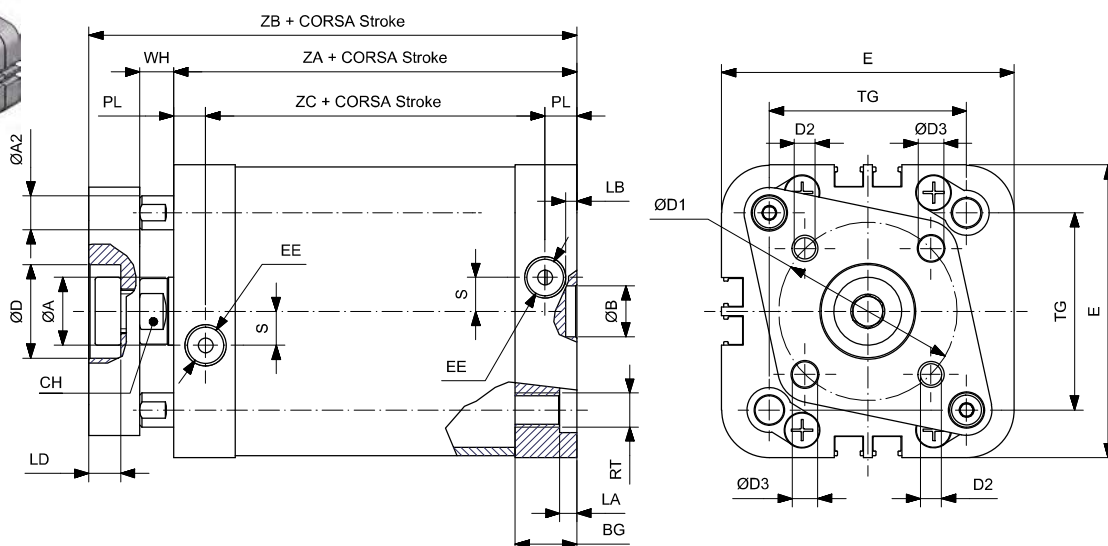


Ømm	ØA	CH	AM	WH	ZA	ZB	ZC	KM	EE	BG	TG	E	RT	LA	PL	S
20	10	9	16	6	37	43	23	M8X1.25	M5X0.8	14.25	22	36	M5X0.8	3	7	2.5
25	10	9	16	6	39	45	25	M8X1.25	M5X0.8	14	26	39.5	M5X0.8	3	7	2.5
32	12	10	19	7	44	51	28.5	M10X1.25	1/8"G	15.5	32.5	49.5	M6X1	3.5	7.75	6
40	12	10	19	7	45	52	29.5	M10X1.25	1/8"G	15.5	38	54	M6X1	3.5	7.75	8
50	16	13	22	8	45	53	29.5	M12X1.25	1/8"G	14.5	46.5	69	M8X1.25	4	7.5	8
63	16	13	22	8	49	57	33.5	M12X1.25	1/8"G	15.5	56.5	79	M8X1.25	4	7.75	11.5
80	20	17	28	10	54	64	36.5	M16X1.5	1/8"G	17.5	72	94.5	M10X1.5	5	8.75	11.5
100	25	21	28	10	67	77	46	M16X1.5	1/8"G	21	89	114.5	M10X1.5	5	10.5	20

CILINDRI COMPATTI ISO 21287 Ø20-100 ISO 21287 COMPACT CYLINDERS Ø20-100

DOPIO EFFETTO MAGNETICO ANTIROTAZIONE NON-ROTATING DOUBLE ACTING MAGNETIC

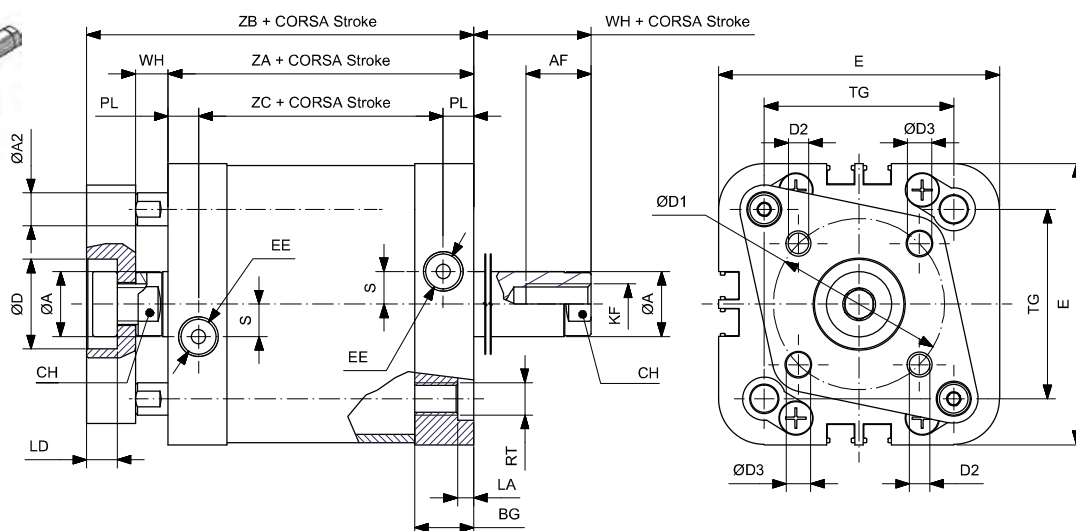
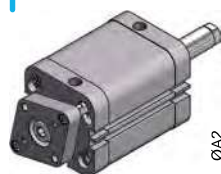
CDEMØ/...KNR



Ømm	ØA	ØD	LD	ØA2	WH	ZA	ZB	ZC	EE	PL	S	RT	BG	LA	TG	E	ØD1	D2	ØD3	ØB	LB	CH
20	10	10.5	5.5	5	6	37	51	23	M5X0.8	7	2.5	M5X0.8	14.25	3	22	36	17	M4X0.7	4	9	2.1	9
25	10	14	5.5	5	6	39	53	25	M5X0.8	7	2.5	M5X0.8	14	3	26	39.5	22	M5X0.8	5	9	2.1	9
32	12	17	6.5	5	7	44	61	28.5	1/8"G	7.75	6	M6X1	15.5	3.5	32.5	49.5	28	M5X0.8	5	9	2.1	10
40	12	17	6	6	7	45	62	29.5	1/8"G	7.75	8	M6X1	15.5	3.5	38	54	33	M5X0.8	5	9	2.1	10
50	16	22	7.5	8	8	45	65	29.5	1/8"G	7.5	8	M8X1.25	14.5	4	46.5	69	42	M6X1	6	12	2.6	13
63	16	22	7.5	8	8	49	69	33.5	1/8"G	7.75	11.5	M8X1.25	15.5	4	56.5	79	50	M6X1	6	12	2.6	13
80	20	24	10.5	10	10	54	78	36.5	1/8"G	8.75	11.5	M10X1.5	17.5	5	72	94.5	65	M8X1.25	8	12	2.6	17
100	25	24	10.5	10	10	67	91	46	1/8"G	10.5	20	M10X1.5	21	5	89	114.5	80	M10X1.25	10	12	2.6	21

DOPIO EFFETTO PASSANTE MAGNETICO ANTIROTAZIONE FILETTATO FEMMINA NON-ROTATING DOUBLE ACTING THROUGH PISTON ROD MAGNETIC FEMALE THREAD

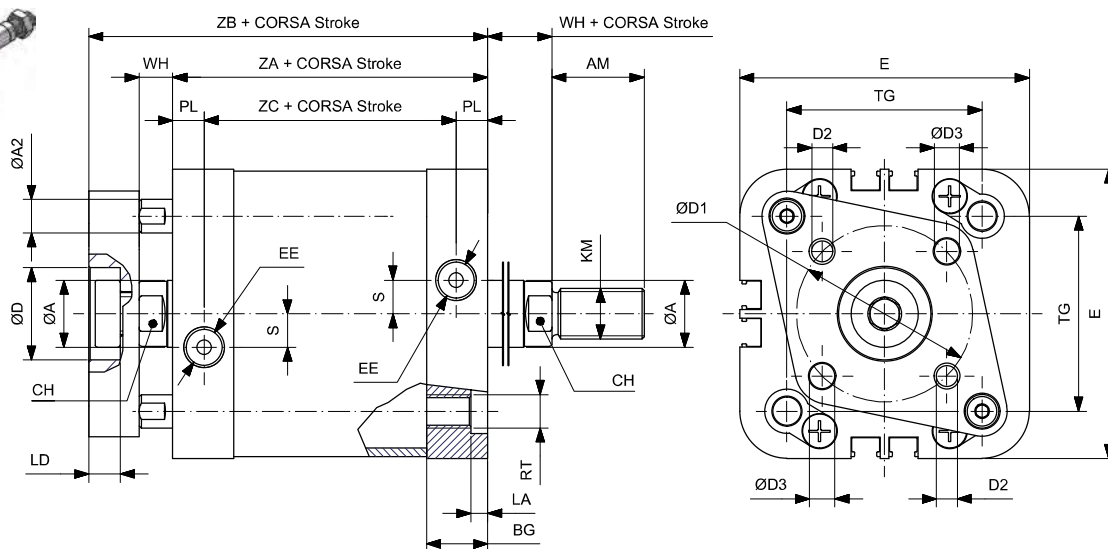
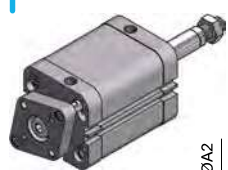
CDEMPØ/...KNRF



Ømm	ØA	KF	AF	ØD	LD	ØA2	WH	ZA	ZB	ZC	EE	PL	S	RT	BG	LA	TG	E	ØD1	D2	ØD3	CH
20	10	M6X1	10	10.5	5.5	5	6	37	51	23	M5X0.8	7	2.5	M5X0.8	14.25	3	22	36	17	M4X0.7	4	9
25	10	M6X1	10	14	5.5	5	6	39	53	25	M5X0.8	7	2.5	M5X0.8	14	3	26	39.5	22	M5X0.8	5	9
32	12	M8X1.25	12	17	6.5	5	7	44	61	28.5	1/8"G	7.75	6	M6X1	15.5	3.5	32.5	49.5	28	M5X0.8	5	10
40	12	M8X1.25	12	17	6	6	7	45	62	29.5	1/8"G	7.75	8	M6X1	15.5	3.5	38	54	33	M5X0.8	5	10
50	16	M10X1.5	16	22	7.5	8	8	45	65	29.5	1/8"G	7.5	8	M8X1.25	14.5	4	46.5	69	42	M6X1	6	13
63	16	M10X1.5	16	22	7.5	8	8	49	69	33.5	1/8"G	7.75	11.5	M8X1.25	15.5	4	56.5	79	50	M6X1	6	13
80	20	M12X1.75	20	24	10.5	10	10	54	78	36.5	1/8"G	8.75	11.5	M10X1.5	17.5	5	72	94.5	65	M8X1.25	8	17
100	25	M12X1.75	20	24	10.5	10	10	67	91	46	1/8"G	10.5	20	M10X1.5	21	5	89	114.5	80	M10X1.5	10	21

DOPPIO EFFETTO PASSANTE MAGNETICO ANTIROTAZIONE FILETTATO MASCHIO
NON-ROTATING DOUBLE ACTING THROUGH PISTON ROD MAGNETIC MALE THREAD

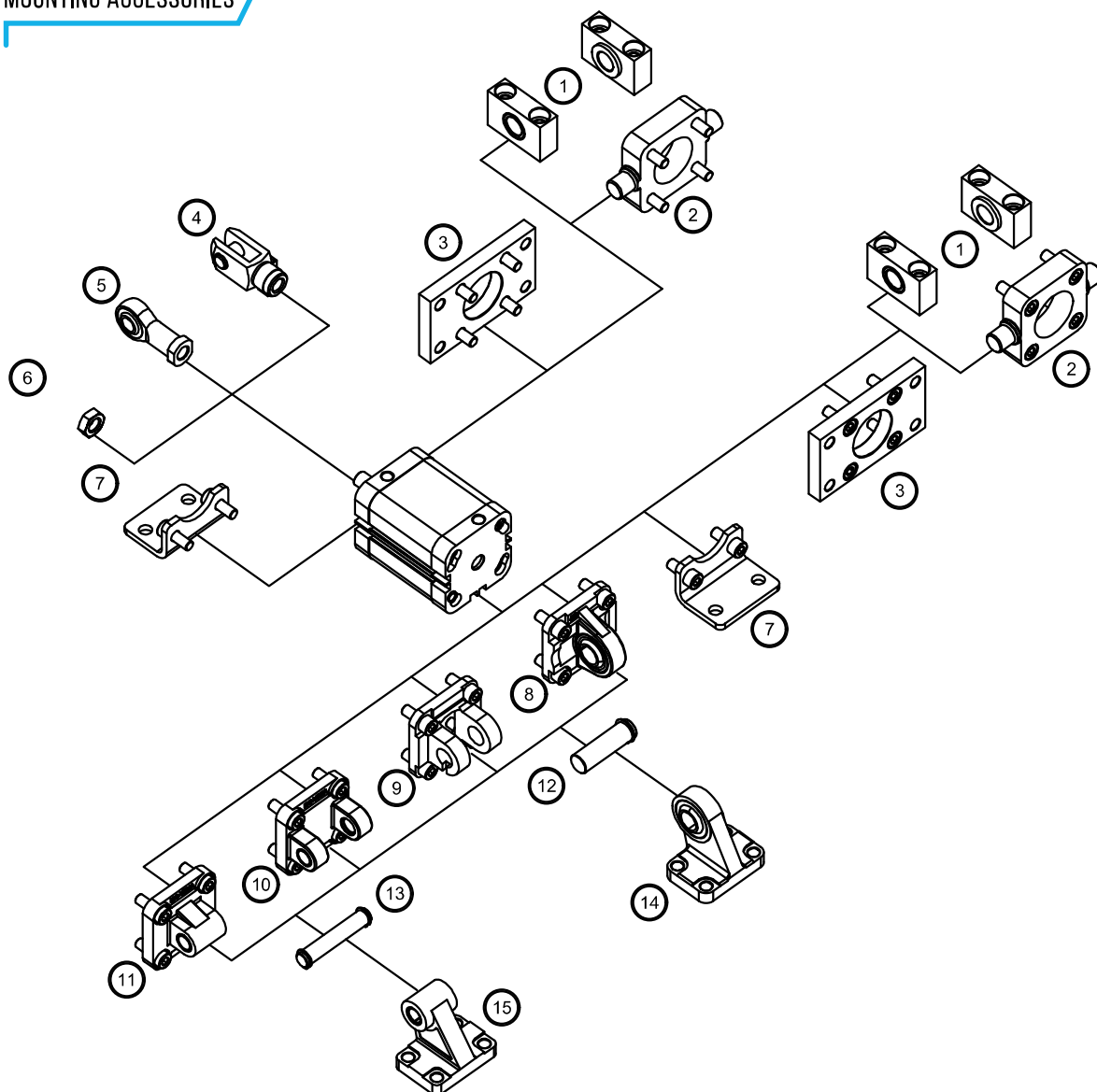
CDEMPØ/...KNRM



Ømm	ØA	KM	AM	ØD	LD	ØA2	WH	ZA	ZB	ZC	EE	PL	S	RT	BG	LA	TG	E	ØD1	D2	ØD3	CH
20	10	M8X1.25	16	10.5	5.5	5	6	37	51	23	M5X0.8	7	2.5	M5X0.8	14.25	3	22	36	17	M4X0.7	4	9
25	10	M8X1.25	16	14	5.5	5	6	39	53	25	M5X0.8	7	2.5	M5X0.8	14	3	26	39.5	22	M5X0.8	5	9
32	12	M10X1.25	19	17	6.5	5	7	44	61	28.5	1/8"G	7.75	6	M6X1	15.5	3.5	32.5	49.5	28	M5X0.8	5	10
40	12	M10X1.25	19	17	6	6	7	45	62	29.5	1/8"G	7.75	8	M6X1	15.5	3.5	38	54	33	M5X0.8	5	10
50	16	M12X1.25	22	22	7.5	8	8	45	65	29.5	1/8"G	7.5	8	M8X1.25	14.5	4	46.5	69	42	M6X1	6	13
63	16	M12X1.25	22	22	7.5	8	8	49	69	33.5	1/8"G	7.75	11.5	M8X1.25	15.5	4	56.5	79	50	M6X1	6	13
80	20	M16X1.5	28	24	10.5	10	10	54	78	36.5	1/8"G	8.75	11.5	M10X1.5	17.5	5	72	94.5	65	M8X1.25	8	17
100	25	M16X1.5	28	24	10.5	10	10	67	91	46	1/8"G	10.5	20	M10X1.5	21	5	89	114.5	80	M10X1.5	10	21

CILINDRI COMPATTI ISO 21287 Ø20-100 ISO 21287 COMPACT CYLINDERS Ø20-100

ACCESSORI DI FISSAGGIO MOUNTING ACCESSORIES



Descrizione Description	Alluminio Aluminium	Acciaio Steel	Acciaio inox Stainless steel
1 Supporto per cerniera intermedia / Support for intermediate hinge (AT4)	-	141	-
2 Cerniera oscillante anteriore-posteriore / Front-rear trunnion (MT5 / MT6)	-	141	-
3 Flangia / Flange (MF1-MF2)	-	139	152
4 Forcella / Clevis	-	131	147
5 Testa a snodo / Rod end	-	132	148
6 Dado per aste / Piston rod nut	-	130	146
7 Piedino basso / Low-rise pedestal (MS1)	-	138	152
8 Cerniera maschio snodata / Male hinge with spherical bearing (MP6)	137	143	-
9 Cerniera stretta per snodo sferico AB6 / Clevis braket, spherical eye, straight AB6	136	142	-
10 Cerniera femmina / Female hinge (MP2)	134	142	150
11 Cerniera maschio / Male hinge (MP4)	135	-	151
12 Perno per cerniera snodata AA6 / Pivot pin, spherical bearing AA6	-	136	-
13 Perno per cerniera femmina / Pivot for female hinge (AA4)	-	135	151
14 Articolazione a squadra con testina snodata DIN 648 K / Square joint with spherical head DIN 648 K	-	138	-
15 Articolazione a squadra / Square joint (AB7)	137	-	151
16 Giunto autoallineante / Self-aligning joint	-	131	-